



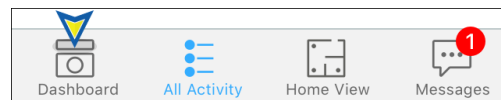
Pulse Mobile App - Lights & Switches

Lights and Switches connected to your Pulse system are controlled from the Dashboard, Home View, or via the Lights & Switches screen accessed through the Navigation Menu.

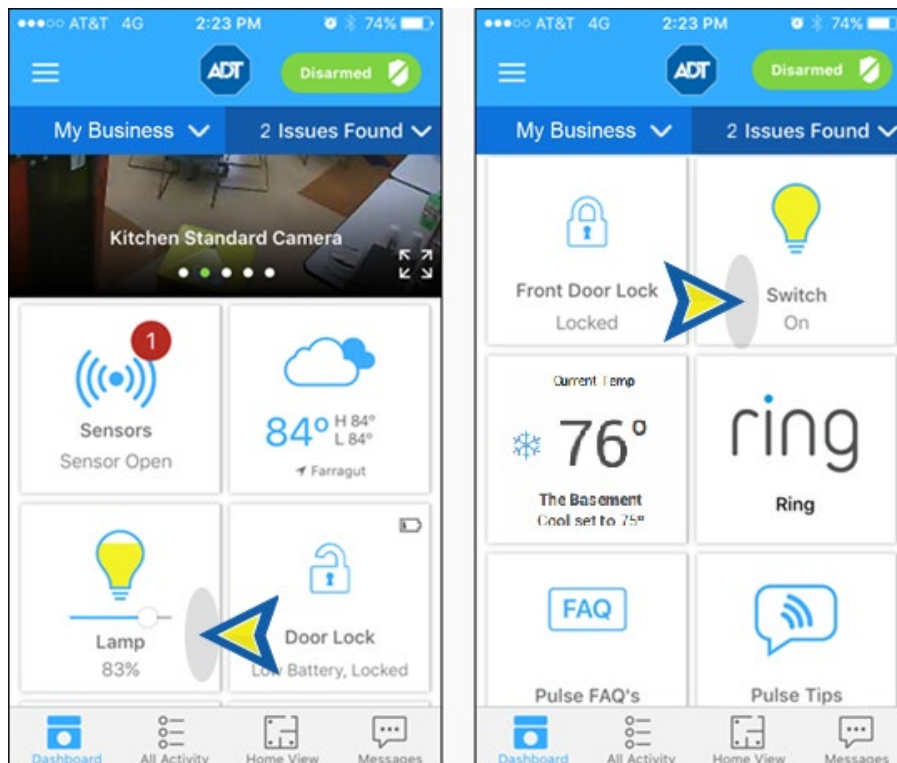
[Lights & Switches](#) [Using the Dashboard](#) [View From Menu](#) [Image Controls](#) [Take Photos and Video](#) [View Photos and Video](#) [Related Topics](#)

Using the Dashboard

Access the Pulse Dashboard. If this is not the default screen upon opening the app, you can access it by tapping DASHBOARD on the Menu Bar / Footer.

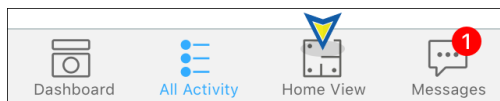


Scroll down the Dashboard to locate the tile for the Light or Switch you want to control. Tap to turn the light or switch on or off. Use the slider to control dimmable lights.

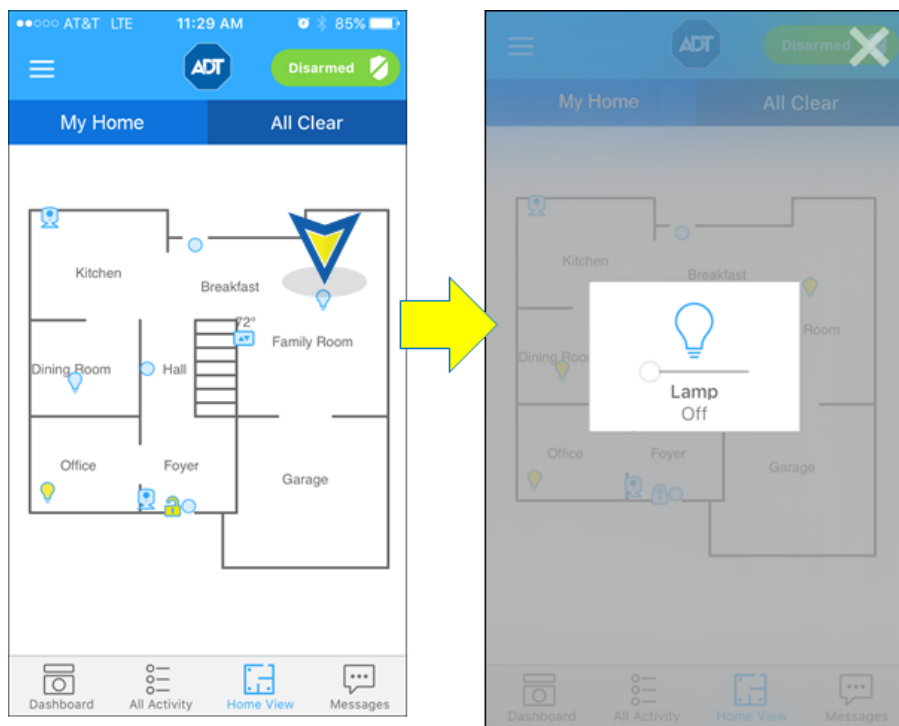


Using Home View

Access the Home View. If this is not the default screen upon opening the app, you can access it by tapping HOME VIEW on the Menu Bar / Footer.

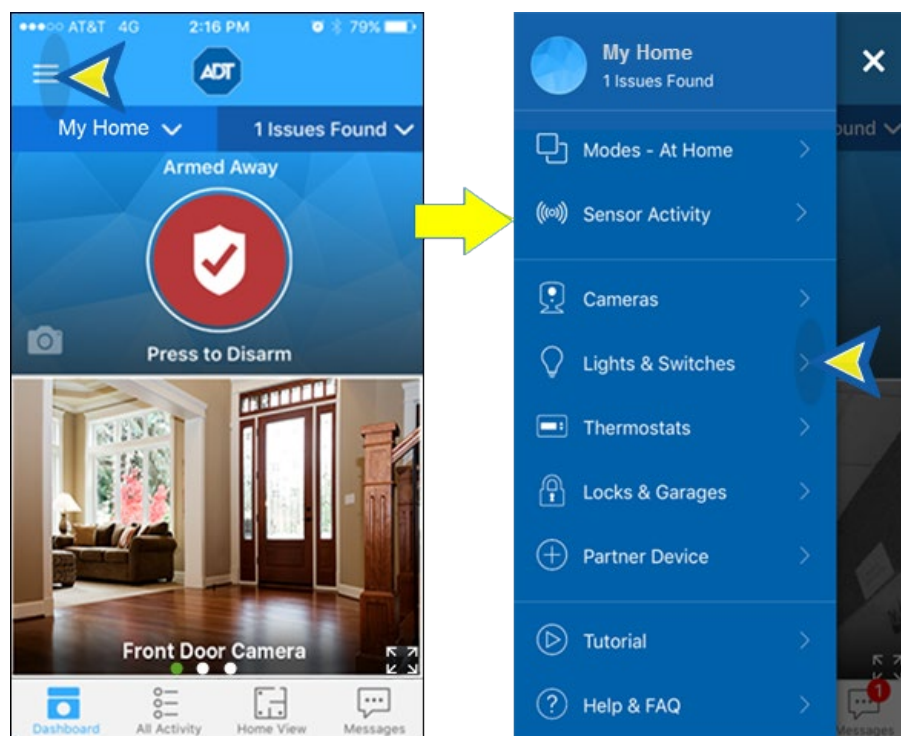


Tap the icon for the desired light or switch. The tile for the individual device will display. Tap to turn the light or switch on or off. Use the slider to control dimmable lights.

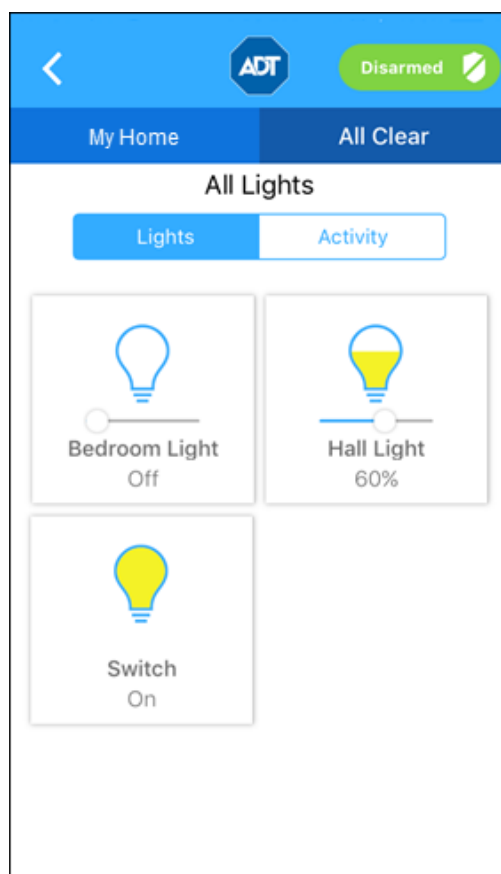


Using the Navigation Menu

Tap the Navigation (hamburger) menu icon ≡ in the left corner of the header to display the main menu, then tap Lights & Switches.



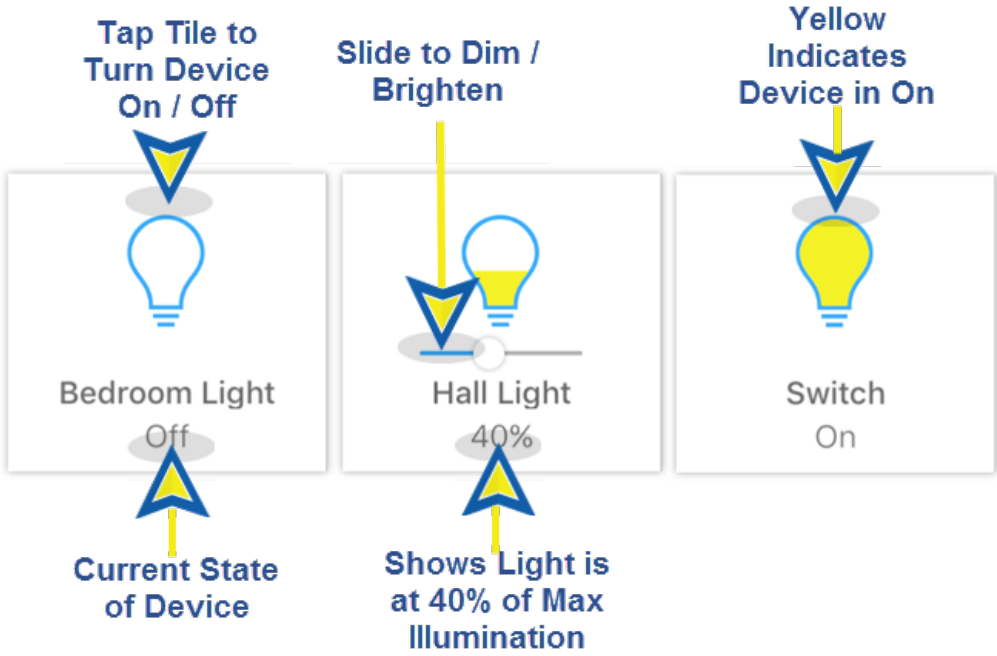
The All Lights screen displays, showing a tile for each light and switch attached to your Pulse system. The devices are listed in alphabetical order by device name. Tap to turn the light or switch on or off. Use the slider to control dimmable lights.



Changing Settings

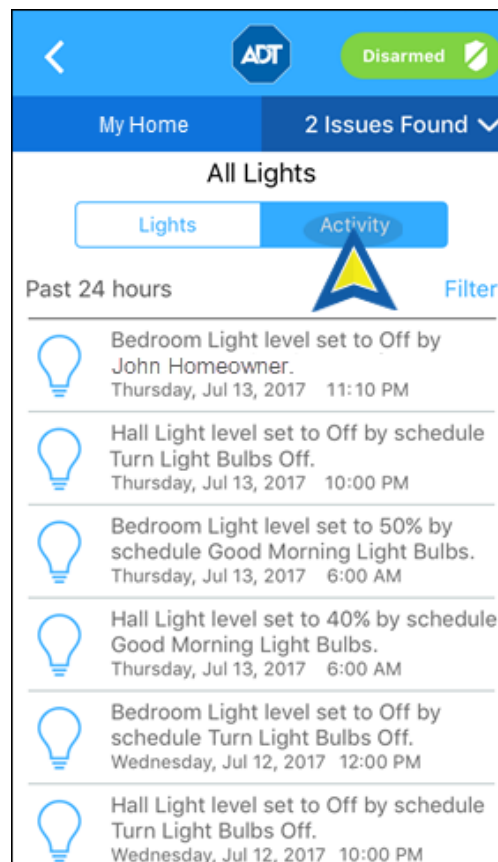
To turn the device On or Off, tap the tile. The current state will be shown beneath the device name on the tile. Also, the icon color will change accordingly – a Clear bulb indicates the device is Off; a Yellow bulb indicates the device is On.

When a dimmer switch is off, slide the dimmer to the right to turn on the light at the selected brightness. The amount of yellow color in the icon will correspond to the percentage of illumination selected. When you turn off a light with a dimmer, the brightness level goes all the way to the left. When you turn that light on again, the brightness level returns to its previous level.



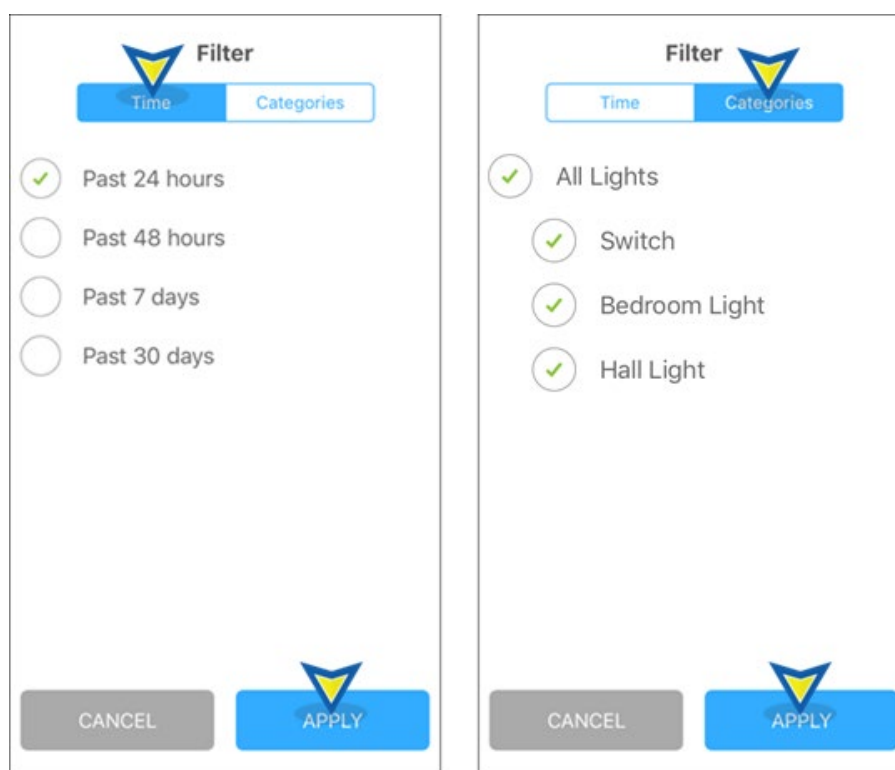
Latest Activity

To view a list of all light and switch activity, tap **Activity** at the top of the All Lights screen. This displays a time- stamped log of all light and switch activity that has occurred within the designated time period; the default is the last 30 days.



You can filter by time or by a specific device. To select, tap the circle by the desired item; a green check indicates that it has been selected. Tap APPLY to display the selection, or CANCEL to cancel.

- **Time:** filters by the selected time period. Tap the time period desired, then tap APPLY.
- **Categories:** Tap ALL LIGHTS to select all lights and switches, or tap the specific device, then tap APPLY.



Related Topics

[Adding a Pulse Device](#)

Here you will find on how to add a Pulse device, including a light or switch, to your Pulse system

[Pulse How-To Videos](#)

Here you will find helpful videos on adding a Pulse device and Troubleshooting a Z-Wave device, such as a thermostat

[Automations and Schedules](#)

Here you will find information about setting up schedules for automatically turning lights and switches on and off on a schedule of your choice

[Pulse Mobile App Basics](#)

Here you will learn about the mobile app, including locating and using the Dashboard tiles and Home View

[Return to Top](#)